

TECH PACK DETAILS

<b>PO#</b>		<b>TECH PACK ID#</b>	
<b>BIN#</b>		<b>DESIGN SPEC#</b>	<b>SPEC_OTC-RAP-0086-19</b>
<b>DATE PO ISSUED:</b>	17-Apr	<b>SPEC COMPLETION DATE:</b>	17-Apr
<b>SHIP DATE:</b>	23-Jul	<b>DESCRIPTION:</b>	MEN'S FLANNEL PANTS
<b>REVISED SHIPDATE</b>		<b>STYLE#</b>	
<b>VENDOR:</b>		<b>SEASON:</b>	FW19
<b>RETAILER:</b>		<b>SIZE RANGE:</b>	S-3XL
<b>LICENSOR + APP#</b>		<b>COLLECTION:</b>	
<b>REPEAT:</b>		<b>FABRICATION:</b>	100% COTTON FLANNEL , 160 GSM

PRODUCT SAFETY TESTING

<b>TESTING REQUIRED?:</b>	YES	<b>FORM SUBMITTED:</b>	
<b>TEST RESULT:</b>		<b>RESULT DATE:</b>	

SEAL TAG ID#s

<b>BLUE TAG ID#</b>		<b>YELLOW TAG ID#</b>		<b>GREEN TAG ID#</b>	
---------------------	--	-----------------------	--	----------------------	--

QC DATE LAST MODIFIED

NO DATE ENTERED

LINESHEET

MENS FLANNEL PANTS

SELF FABRIC DRAWCORD

ONSEAM POCKETS

FLANNEL

PACKAGING PUT-UP:

FEATURES:  
- FLANNEL PANT  
- DRAW STRING  
- POCKETS

REFERENCE IMAGE:

SIZE: S, M, L, XL, XXL, 3XL

COLOUR PALETTE

BRINKLE	MOONSTRUCK	BRIGHT WHITE	MUSTARD GOLD	Midnight	ASPHALT	SLUESTONE	WAVELY
18-1110 TCK	14-400 TCK	11-081 TCK	16-1133 TCK	19-4110 TCK	19-0201 TCK	18-4217 TCK	18-020 TCK
ANTHRACITE	PIPLE GREEN	GINGER BREAD	ARCTIC	TANGO RED	ALLOY	OUTRICAL	DARK NAVY
19-4007 TCK	15-0413 TCK	18-024 TCK	17-081 TCK	19-178 TCK	16-9013 TCK	15-900 TCK	16-4113 TCK

NM

**GERTEX** All the patterns, colour combinations and designs contained herein are the exclusive property of Gertex Hosiery, Inc. and is intended for use of the party to which it is addressed and may contain information that is privileged, confidential and exempt from disclosure. Information contained herein cannot be reproduced, copied and/or distributed to any third party other than it's intended recipient without prior written approval of Gertex Hosiery, Inc.



	<b>RFQ#</b>	<b>SOURCED BY:</b>
--	-------------	--------------------

**QUOTE INFO**

<b>SIZING:</b>		<b>WEIGHT:</b>		<b>FABRICATION:</b>	
<b>QUALITY:</b>		<b>CONSTRUCTION:</b>		<b>DESIGN:</b>	

**NOTES:**

**PHOTOS:**

**\*\* DO NOT START PRODUCTION UNTIL BRAND MANAGEMENT APPROVES SAMPLE \*\***

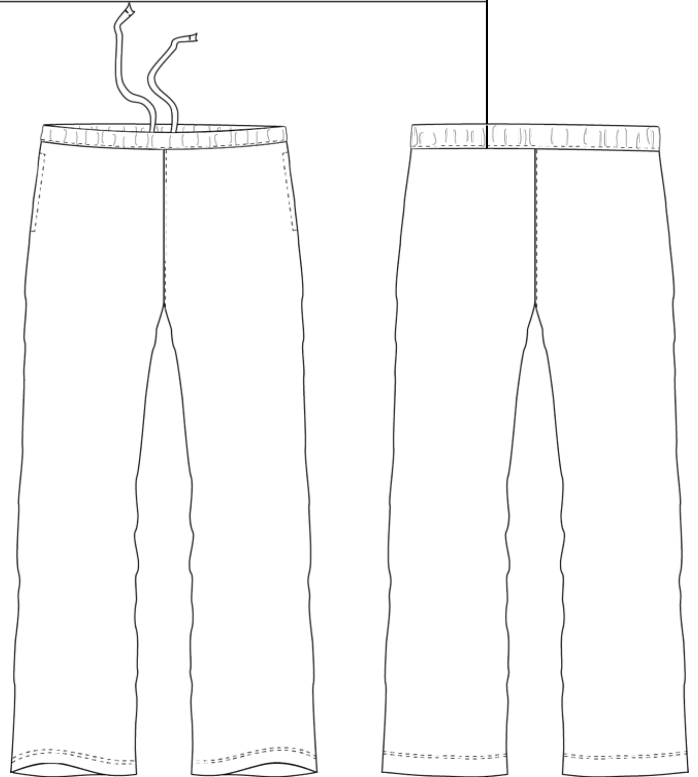
**TAB: QUOTE INFO**

# PJ PANTS

## GANDER FLANNEL PAJAMA PANTS- MENS

PROFILE CODE: SW-PNT-000

CODE	AREA MEASURED	OL (+/-)	MENS						REFERENCE TECHNICAL SKETCH
ALL MEASUREMENTS ARE IN INCHES. FLAT MEASUREMENTS SHOWN									
SIZE			S	M	L	XL	2XL	3XL	
A	WAIST RELAXED	1/4	15	16 1/2	18	19 5/8	21 1/4	22 7/8	
B	WAIST - EXTENDED	1/4	20	21 1/2	23	25	27	29	
C	WB HEIGHT	1/8	1 1/2	1 1/2	1 1/2	1 1/2	1 1/2	1 1/2	
D	WAIST DRAWCORD LENGTH - TOTAL	1/2	54	57	60	64	68	72	
E	FRONT RISE - FROM TOP EDGE OF WAIST	3/8	11 3/4	12 3/8	13	13 5/8	14 1/4	14 7/8	
F	BACK RISE - FROM TOP EDGE OF WAIST	3/8	16 1/2	17 1/4	18	18 3/4	19 1/2	20 1/4	
G	LOW HIP POSITION FROM TOP OF WAIST	0	8	8 1/2	9	9 1/2	10	10 1/2	
H	LOW HIP (V-MEASURE)	3/8	21	22 1/2	24	25 1/2	27	28 1/2	
I	THIGH 1" BELOW CROTCH	1/4	12 3/4	13 5/8	14 1/2	15 3/8	16 1/4	17 1/8	
J	KNEE - 12" BELOW CROTCH POINT	1/4	10	10 5/8	11 1/4	11 3/4	12 1/4	12 3/4	
K	LEG OPENING, PANT, RELAXED	1/4	8	8 5/8	9 1/4	9 1/2	9 3/4	10	
L	INSEAM - PANTS, REG.	3/8	31	31	31	31	31	31	
M	FRONT POCKET POSITION - FROM WB SEAM	1/8	3/4	1 1/4	1 1/4	1 1/4	1 1/4	1 1/4	
N	FRONT POCKET OPENING	1/8	6	6 1/2	6 1/2	6 1/2	7	7	
O	FRONT POCKET BAG LENGTH	1/4	11	11	11	11	11 1/2	11 1/2	
P	FRONT POCKET BAG WIDTH	1/4	7	7	7	7	7	7	
Q	HEM HEIGHT AT LEG OPENING	0	1	1	1	1	1	1	



**Notes:**

**REVISIONS:**

Profile Created By: RYAN 4/15/2019

TECHNICIAN: RYAN

**BOM: FABRICATIONS**

ITEM DESCRIPTION	QUALITY		COMMENTS
SELF FABRIC	CONTENT: 100% COTTON	WEIGHT: 160 GSM	FLANNEL
	YARN GAUGE:	NEEDLE COUNT:	

**BOM: TRIMS**

ITEM DESCRIPTION	CONTENT / COLOUR	SIZE	SOURCE	QTY	COMMENTS
FLAT ELASTIC	WHITE	1.5" WIDTH	VENDOR SOURCED	1	INSIDE WAISTBAND
SELF FABRIC TAPE	SEE DESIGN SPEC	3/8"	VENDOR SOURCED	1	DRAWCORD: INSIDE WAISTBAND
FUSIBLE INTERFACING	WHITE	MID WEIGHT	VENDOR SOURCED	N/A	INSIDE WAISTBAND
THREAD	DTM SELF	T30	A&E OR COATS	N/A	ALL STITCHING, BARTACKS

**BOM: LABELS/EXTERNAL LOGO**

ITEM DESCRIPTION	DESCRIPTION	SIZE	SOURCE	QTY	COMMENTS
MAIN LABEL	LAZY MONDAYS WOVEN MITERED MAIN LABEL	TBD	VENDOR SOURCED	1	CB INTERIOR WB SEAM
SIZE/COO LABEL	LAZY MONDAYS WOVEN SIZE/COO LABEL	1" X 3/3"	VENDOR SOURCED	1	SET AT BOTTOM OF MAIN LABEL
CARE/CONTENT LABEL	SATIN CARE CONTENT LABEL (WHITE), PRINTED	TBD	VENDOR SOURCED	1	WEARER'S LEFT INTERIOR SIDE SEAM 2" BELOW WB SEAM

**BOM: HANGTAGS/PACKAGING**

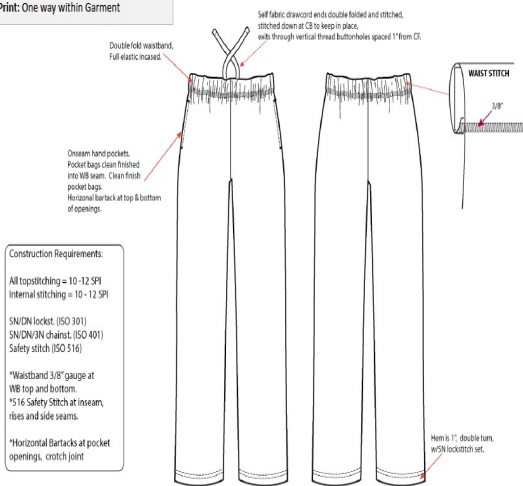
REFER TO GANDER OUTDOORS OWN BRAND STANDARD GUIDELINES FOR HANGTAG PLACEMENT

ITEM DESCRIPTION	DESCRIPTION	SIZE	SOURCE	QTY	COMMENTS
MAIN HANGTAG	LAZY MONDAYS MAIN HANGTAG - CLAMSHELL	63.3 MM X 126.8 MM	VENDOR SOURCED	1	
UPC STICKER	UPC STICKER W/ RETAIL PRINTED - BACK OF HANGTAG, UPC VISIBLE IN POLYBAG BY FLIPPING TAG	48 MM X 25 MM	MAXIM	1	PRINTED STICKER, USING ONE OF THE FOLLOWING BARCODE FORMATS: UPC-A, UPC-E, EAN-13, EAN-8
HANGER	12" BOTTOM HANGER W/ SIZER	58 X 41.5 X 39 CM	MAINETTI	1	GENERIC
POLYBAG	POLYBAG 1.00 MIL FOR INDIVIDUAL PACKAGING INDIVIDUALLY FOLDED & BAGGED	N/A	VENDOR SOURCED	1	GENERIC

**CONSTRUCTION DETAIL**

**TECHNICAL ILLUSTRATION**

Cutting Instructions:  
 Plaid: One way within garment  
 One direction print: One-way  
 Tossed Print: One way within Garment



**Construction Requirements:**  
 All topstitching = 10-12 SPI  
 Internal stitching = 10-12 SPI  
 SN/DN lockst. (ISO 301)  
 SN/DN/3N chainst. (ISO 401)  
 Safety stitch (ISO 516)  
 \*Waistband 3/8" gauge at WB top and bottom.  
 \*516 Safety Stitches at inseam, rises and side seams.  
 \*Horizontal Bartacks at pocket openings, crotch joint

DESCRIPTION	DETAILS	STITCH TYPE	STITCH ILLUSTRATION
WAISTBAND	ELASTIC ENCASED INSIDE DOUBLE FOLD WAISTBAND, TOPSTITCHED	#301 LOCKSTITCH, 10-12 SPI	
DRAWCORD	SELF FABRIC DRAWCORD INSERTED THROUGH BUTTONHOLES AT CF (INSIDE) SPACED 1" APART. STITCHED TO WAISTBAND AT CB. ENDS OF DRAWCORD DOUBLE FOLDED AND STITCHED	#301 LOCKSTITCH, 10-12 SPI #304 BUTTONHOLE	
POCKETS	ONSEAM POCKETS, CLEAN FINISHED INTO WB SEAM. POCKET BAGS CLEAN FINISHED. HORIZONTAL BARTACKS AT TOP & BOTTOM OF OPENINGS	#301 LOCKSTITCH, 10-12 SPI	
INSEAM/OUTSEAM	SAFETY STITCHED TOGETHER, INSEAM TOPSTITCHED	#304 BARTACK #516 - 5 THREAD SAFETY STITCH	
FRONT & BACK RISE	SAFETY STITCHED TOGETHER, TOPSTITCHED	#301 LOCKSTITCH, 10-12 SPI #516 - 5 THREAD SAFETY STITCH	
HEM	1" HEM, DOUBLE TURNED, TOPSTITCHED	#301 LOCKSTITCH, 10-12 SPI	

\*\* DO NOT START PRODUCTION UNTIL BRAND MANAGEMENT APPROVES SAMPLE \*\*

TAB: CONSTRUCTION DETAIL & BOM

TECHNICIAN:

APPAREL PROFILE QC

**\*\* ALL MEASUREMENTS ARE IN INCHES \*\***

AREA MEASURED	TOL (+/-)	SIZE	STAGE	STAGE	STAGE	SIZE	STAGE	STAGE	STAGE	SIZE	STAGE	STAGE	STAGE	COMMENTS

\*\* DO NOT START PRODUCTION UNTIL BRAND MANAGEMENT APPROVES SAMPLE \*\*

CONSTRUCTION DETAIL COMMENTS						
	PO#		BIN#		TECHNICIAN:	
WEIGHT	PLEASE SELECT		SOCK FIT: NAHM#	PLEASE SELECT		QTY RECEIVED:
WINTERWEAR FIT: HAND OR HEAD FORM	PLEASE SELECT		SOCK QUALITY: FLOATS AND GRIN THROUGH	PLEASE SELECT		
BLUE TAG ID#		YELLOW TAG ID#		GREEN TAG ID#		
PRODUCT QUALITY CONTROL COMMENTS						
	DESIGN	COLOUR	QUALITY/WORKMANSHIP	SIZE	NOTES	APPROVAL STATUS
STAGE: PLEASE SELECT						PLEASE SELECT
COMMENTS BY:						
DATE RECEIVED:						
STAGE: PLEASE SELECT						PLEASE SELECT
COMMENTS BY:						
DATE RECEIVED:						
STAGE: PLEASE SELECT						PLEASE SELECT
COMMENTS BY:						
DATE RECEIVED:						
STAGE: PLEASE SELECT						PLEASE SELECT
COMMENTS BY:						
DATE RECEIVED:						
** VENDOR PERFORMANCE RATING HAS BEEN UPDATED AT THIS STAGE **						
TOP						PLEASE SELECT
COMMENTS BY:						
DATE RECEIVED:						
** DO NOT START PRODUCTION UNTIL BRAND MANAGEMENT APPROVES SAMPLE **						
TAB: DESIGN, QUALITY AND SIZING						

DESIGN QC JPGs

STAGE: PLEASE SELECT

DATE & SOURCE

STAGE: PLEASE SELECT

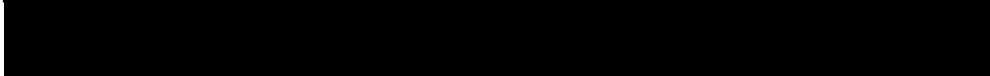
DATE & SOURCE

STAGE: PLEASE SELECT

DATE & SOURCE

**\*\* DO NOT START PRODUCTION UNTIL BRAND MANAGEMENT APPROVES SAMPLE \*\***

**TAB: DESIGN, QUALITY & SIZING JPGS**



**TECHNICIAN:**

**SHIPPING CARTON DIMENSIONS & WEIGHT**

DATE	WEIGHT (kg)	LENGTH (cm)	WIDTH (cm)	HEIGHT (cm)

**NOTES:**

**STICKERS & CARTON QC**

CHECKED FOR:	DATE	NAME	NEXT STAGE

**\*\* DO NOT START PRODUCTION UNTIL BRAND MANAGEMENT APPROVES SAMPLE \*\***

**TAB: STICKER & CARTON QC**





VENDOR RATING

	R	4	3	2	1					
Product	PP Date	3		Met original date	Late 2wks	Later than 2 weeks				
	Fit	3		All correct	Majority correct	Inconsistent- Most incorrect				
	Quality	4	Met standards	Minor defect on one or two	Minor defect on most	Major defect poor quality				
	TOP	3		Met original date	Late 2wks	Later than 2 weeks				
	Trade	2			Met original date	Failed to meet target date				
Design	Following Direction	6		Prompt flow of communication clear. Rate 6	Need some follow up, but executes direction well. Rate 3	Does not follow direction. Poor response. Rate 1				
	Colour	4	Match on PP1	Match on PP2	Several PP/ lab dips to match	no successful in matching Rate 0				
	Execution	2			overall good product	Poor overall quality				
Packaging	Execution	2			overall good product	Poor overall quality				
	Quality	4	Match Col/Quality	Match on 2 proof	Actual pkg not match to app	Errors on actual pkg.				
	Following Direction/Communications.	3		Prompt flow of communication clear	Need some follow up, but executes direction well	Does not follow direction. Poor response.				
Audits & phone communication	Audit updates	3		Prompt with auto updates	Move to other factories due to unsatisfactory audits	No audits available Rate 0	3	6	13	Gertex Licence Orders Max. 45
	phone communication	3		Reachable and able to communicate and follow directions clearly	Reachable but not able to resolve issue or does not follow/understand direction	Not Reachable. Rate 0	3	6	14	Gertex Orders Max. 42
Wal-Mart <i>Repeat = within same Year</i>	Testing Integrity	4	app on 1st.	app. On 2nd test	submitted incorrectly Rate 0	Fail on more than 2 tests Rate 0				
	CTL Target dates	3		Met Target dates	Late 2wks	Later than 2 weeks				
	CTL Trimming & quality	3		Very good	some rejects Extra trimming required.	Unsatisfactory quality. Could not submit for testing.		6	10	Wal-Mart orders Max 58
	CTL Testing	3		Passed 1st test	Resubmit required	Failed second test. Rate 0				
OTC	Meet ship schedule	3		Met original date	Late 2wks	Later than 2 weeks				
	Following Direction/Communications.	3		Prompt to accommodate customer request	Need some follow up, but follows direction well	Refuse to make changes requested by customer or too late to make changes. Rate 0		6	10	Wal-Mart License orders max.61
	Maximum	61					0	0		Repeat GTRX Max 31
		90-100%	70 - 90%	50-70%	49% and under					
		Excellent	Good	Need to improve	Unacceptable.					

---- PLEASE DO NOT OVERRIDE BELOW----

Product	Design	Packaging	#REF!	Audits & phone communication	Wal-Mart within same Year
0%	0%	0%	#REF!	100%	0%
0%	0%	0%	#REF!	100%	0%
0%	0%	0%	#REF!	100%	0%

%

Submission stage:

Please select

RUSH:

Picture enclosed:

Technician:

Name	
Please put in date	

Gertex Purchase order number:

Licenser Approval #:

Approval or Direction required by:  
(In order to meet ship date, respond is required)

<u>Description</u>	<u>Style</u>			
		Please select	Please select	Please select
		Please select	Please select	Please select
		Please select	Please select	Please select
		Please select	Please select	Please select
		Please select	Please select	Please select
		Please select	Please select	Please select
		Please select	Please select	Please select
		Please select	Please select	Please select

Comments:

<b>Customer purchase order number :</b>	Please put in Customer PO#	<b>Submission stage:</b>	Please select	<b>Technician:</b>	<b>Name</b>
				<b>Gertex Purchase order number:</b>	<b>Please put in Gtx PO#</b>
<b>Ship Date:</b>	Please put in date			<b>Approval or Direction required by:</b> (In order to meet ship date, respond is required)	Please put in date
<b>Submission Date :</b>	Please put in date			<b>Picture enclosed:</b>	

<b>Description:</b>	<b>Style:</b>	<b>UPC</b>			
			Please select	Please select	Please select
			Please select	Please select	Please select
			Please select	Please select	Please select
			Please select	Please select	Please select
			Please select	Please select	Please select

**Design, Quality & Sizing:**

**Packaging:**